

# Conceptual Review Agenda

Schedule for 03/17/22

Meetings hosted via Zoom Web Conferencing

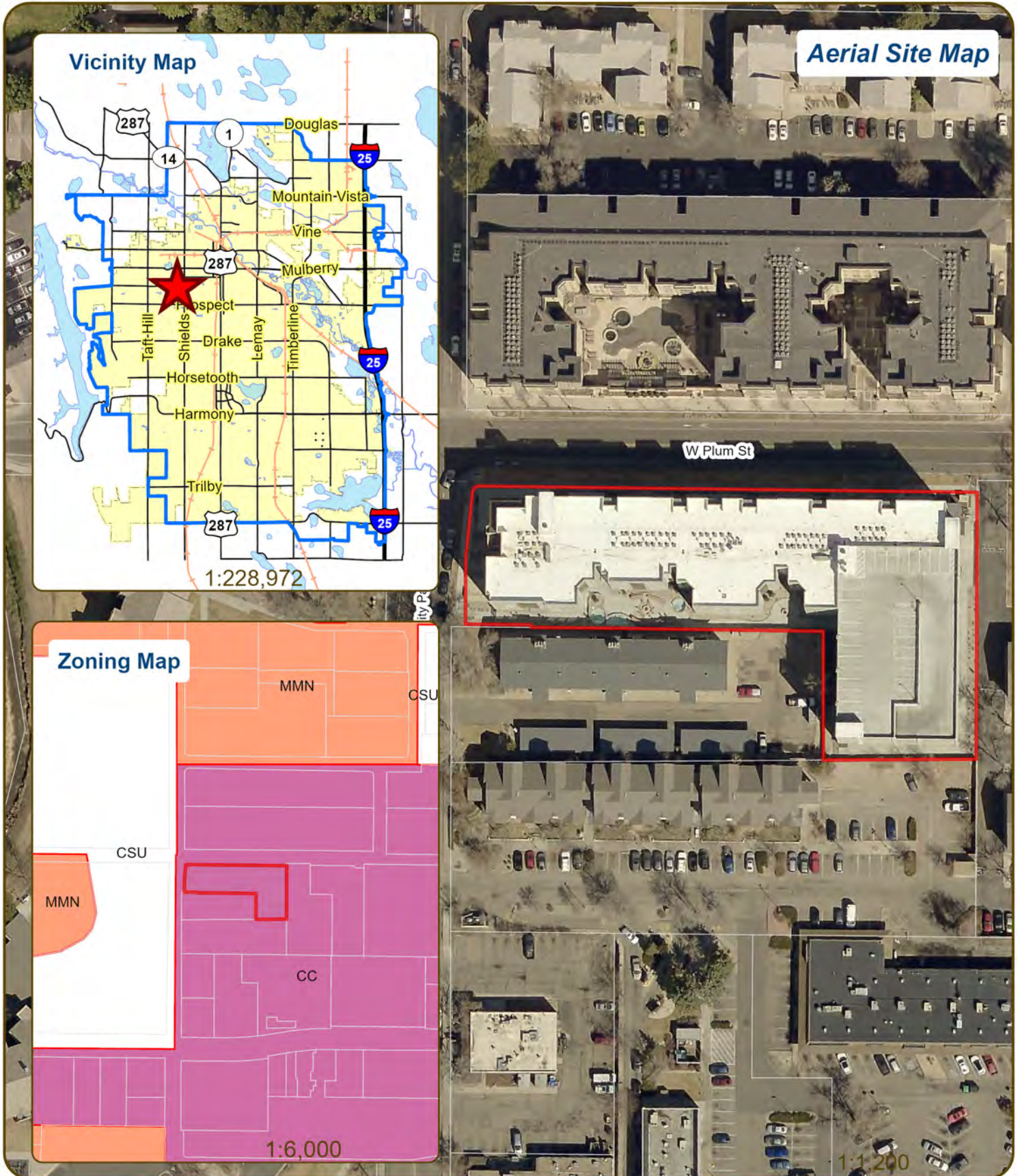
---

## Thursday, March 17, 2022

Time	Project Name	Applicant Info	Project Description	
9:15	1323 W Plum St Wireless Telecommunication Equipment  CDR220022	Mike Sharlow 970-485-2996 mksharlow1@gmail.com	This is a request to install wireless telecommunication equipment at 1323 W Plum St (parcel # 9715153001). The proposal includes 3 wireless antennas on the roof of the four-story parking garage structure. Access is taken from W Plum St directly to the north. The site is approximately .17 miles west of S Shields St and approximately .09 miles north of W Elizabeth St. The property is within the Community Commercial (CC) zone district and the project would be subject to Basic Development Review (BDR).	Planner: Will Lindsey Engineer: Sophie Buckingham DRC: Todd Sullivan

---

# 1323 W Plum St Wireless Telecommunication Equipment



These map products and all underlying data are developed for use by the City of Fort Collins for its internal purposes only, and were not designed or intended for general use by members of the public. The City makes no representation or warranty as to its accuracy, timeliness, or completeness, and in particular, its accuracy in labeling or displaying dimensions, contours, property boundaries, or placement of location of any map features thereon. THE CITY OF FORT COLLINS MAKES NO WARRANTY OF MERCHANTABILITY OR WARRANTY FOR FITNESS OF USE FOR PARTICULAR PURPOSE, EXPRESSED OR IMPLIED, WITH RESPECT TO THESE MAP PRODUCTS OR THE UNDERLYING DATA. Any users of these map products, map applications, or data, accepts same AS IS, WITH ALL FAULTS, and assumes all responsibility of the use thereof, and further covenants and agrees to hold the City harmless from and against all damage, loss, or liability arising from any use of this map product, in consideration of the City's having made this information available. Independent verification of all data contained herein should be obtained by any users of these products, or underlying data. The City disclaims, and shall not be held liable for any and all damage, loss, or liability, whether direct, indirect, or consequential, which arises or may arise from these map products or the use thereof by any person or entity.







CONCEPTUAL REVIEW: APPLICATION

General Information

All proposed development projects begin with Conceptual Review. Anyone with a development idea can schedule a Conceptual Review meeting to get feedback on prospective development ideas. At this stage, the development idea does not need to be finalized or professionally presented. However, a sketch plan and this application must be submitted to City Staff prior to the Conceptual Review meeting. The more information you are able to provide, the better feedback you are likely to get from the meeting. Please be aware that any information submitted may be considered a public record, available for review by anyone who requests it, including the media. The applicant acknowledges that they are acting with the owner's consent.

Conceptual Reviews are scheduled on three Thursday mornings per month on a "first come, first served" basis and are a free service. One 45 meeting is allocated per applicant and only three conceptual reviews are done each Thursday morning. A completed application must be submitted to reserve a Conceptual Review time slot. Complete applications and sketch plans must be submitted to City Staff on Thursday, no later than end of day, two weeks prior to the meeting date. Application materials must be e-mailed to currentplanning@fcgov.com. If you do not have access to e-mail, other accommodations can be made upon request.

At Conceptual Review, you will meet with Staff from a number of City departments, such as Community Development and Neighborhood Services (Zoning, Current Planning, and Development Review Engineering), Light and Power, Stormwater, Water/Waste Water, Advance Planning (Long Range Planning and Transportation Planning) and Poudre Fire Authority. Comments are offered by staff to assist you in preparing the detailed components of the project application. There is no approval or denial of development proposals associated with Conceptual Review. At the meeting you will be presented with a letter from staff, summarizing comments on your proposal.

\*BOLDED ITEMS ARE REQUIRED\* \*The more info provided, the more detailed your comments from staff will be.\*

Contact Name(s) and Role(s) (Please identify whether Consultant or Owner, etc) \_\_\_\_\_

Mike Sharlow - WyCo Field Services - Contractor

Business Name (if applicable) \_\_\_\_\_

Your Mailing Address \_\_\_\_\_

Phone Number \_\_\_\_\_ Email Address \_\_\_\_\_

Site Address or Description (parcel # if no address) \_\_\_\_\_

Description of Proposal (attach additional sheets if necessary) \_\_\_\_\_

Proposed Use \_\_\_\_\_ Existing Use \_\_\_\_\_

Total Building Square Footage \_\_\_\_\_ S.F. Number of Stories \_\_\_\_\_ Lot Dimensions \_\_\_\_\_

Age of any Existing Structures \_\_\_\_\_

Info available on Larimer County's Website: http://www.co.larimer.co.us/assessor/query/search.cfm

If any structures are 50+ years old, good quality, color photos of all sides of the structure are required for conceptual.

Is your property in a Flood Plain?  Yes  No If yes, then at what risk is it? \_\_\_\_\_

Info available on FC Maps: http://gisweb.fcgov.com/redirect/default.aspx?layerTheme=Floodplains.

Increase in Impervious Area \_\_\_\_\_ S.F.

(Approximate amount of additional building, pavement, or etc. that will cover existing bare ground to be added to the site)

Suggested items for the Sketch Plan:

Property location and boundaries, surrounding land uses, proposed use(s), existing and proposed improvements (buildings, landscaping, parking/drive areas, water treatment/detention, drainage), existing natural features (water bodies, wetlands, large trees, wildlife, canals, irrigation ditches), utility line locations (if known), photographs (helpful but not required). Things to consider when making a proposal: How does the site drain now? Will it change? If so, what will change?





**NOTES**

1. CONTRACTOR SHALL FIELD VERIFY ALL DIMENSIONS.
2. CONTRACTOR SHALL MAINTAIN A 10'-0" MINIMUM SEPARATION BETWEEN THE PROPOSED GPS UNIT, TRANSMITTING ANTENNAS AND EXISTING GPS UNITS.



9601 S. MERIDIAN BLVD.  
ENGLEWOOD, CO 80112



6335 DOWNING ST  
DENVER, CO 80216

IT IS A VIOLATION OF LAW FOR ANY PERSON, UNLESS THEY ARE ACTING UNDER THE DIRECTION OF A LICENSED PROFESSIONAL ENGINEER, TO ALTER THIS DOCUMENT.

DRAWN BY:	CHECKED BY:	APPROVED BY:
HW	ML	TA
RFDS REV #:		11/2/21

**PRELIMINARY DOCUMENTS**

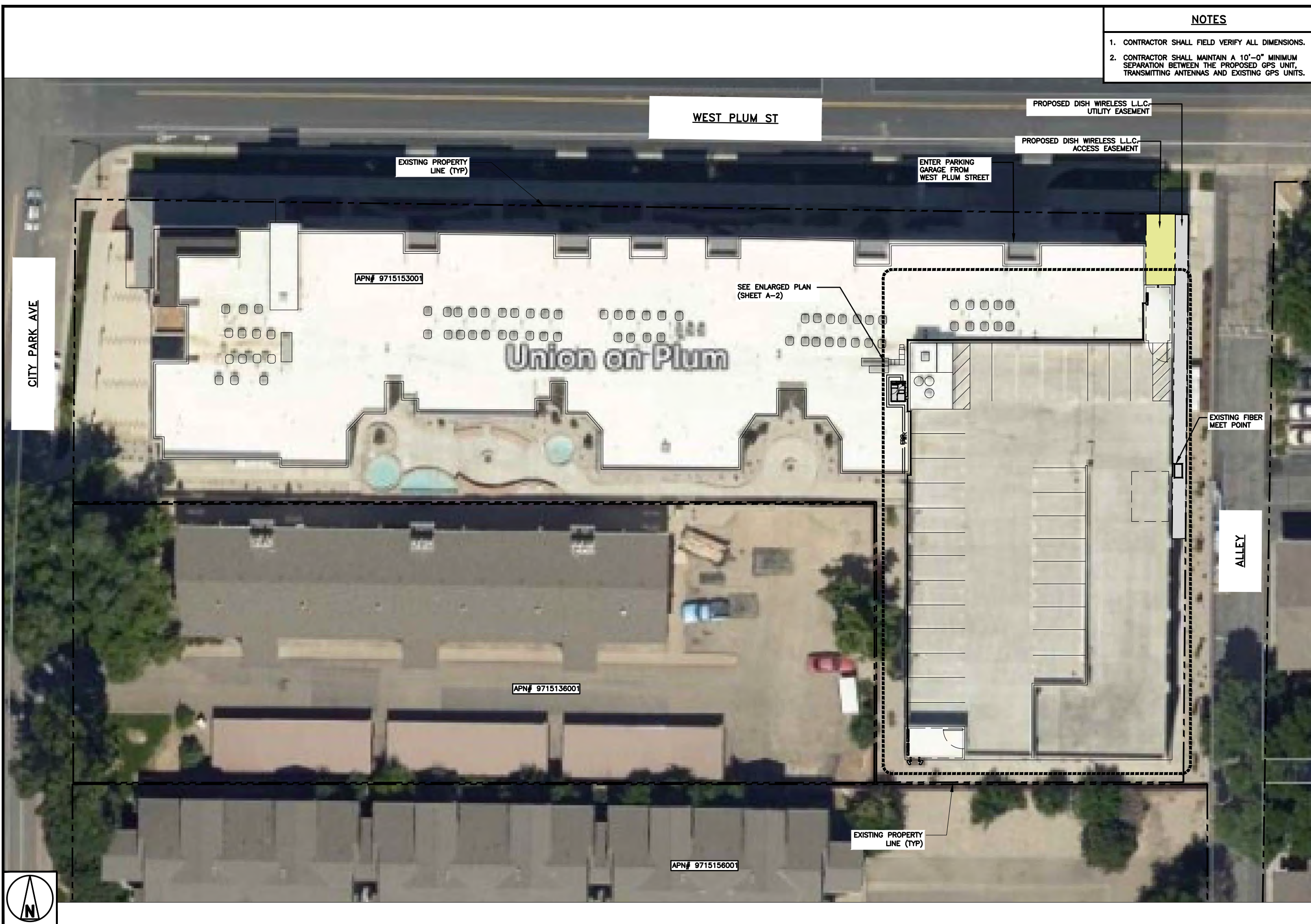
SUBMITTALS		
REV	DATE	DESCRIPTION
A	11/29/21	ISSUED FOR REVIEW

A&E PROJECT NUMBER  
**DNDEN00178B**

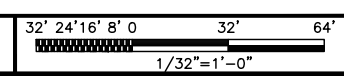
DISH Wireless L.L.C.  
PROJECT INFORMATION  
**DNDEN00178B**  
1323 WEST PLUM STREET  
FORT COLLINS, CO 80521

SHEET TITLE  
**PARCEL MAP**

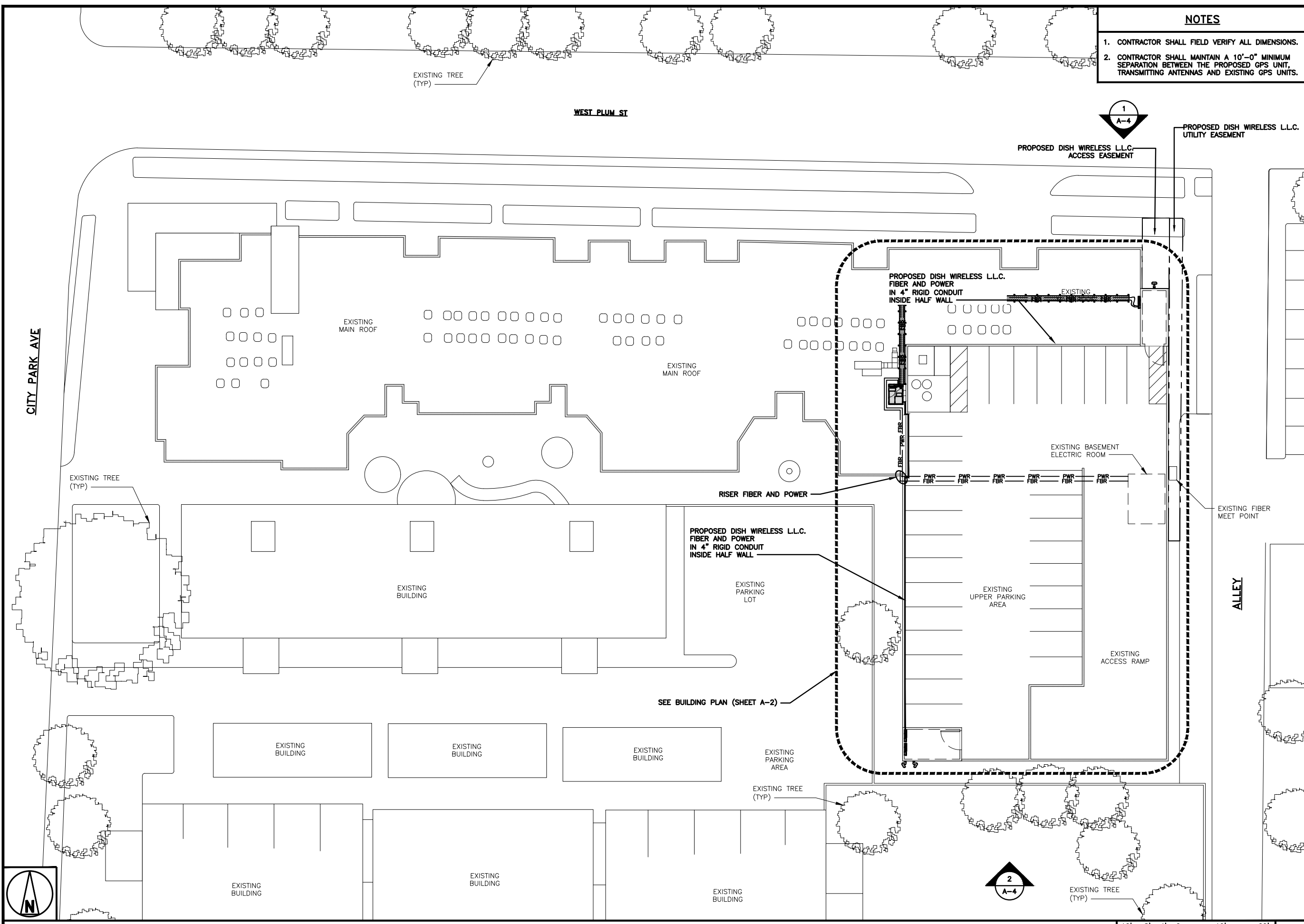
SHEET NUMBER  
**A-1.1**



**PARCEL MAP**







- NOTES**
1. CONTRACTOR SHALL FIELD VERIFY ALL DIMENSIONS.
  2. CONTRACTOR SHALL MAINTAIN A 10'-0" MINIMUM SEPARATION BETWEEN THE PROPOSED GPS UNIT, TRANSMITTING ANTENNAS AND EXISTING GPS UNITS.



9601 S. MERIDIAN BLVD.  
ENGLEWOOD, CO 80112



6335 DOWNING ST  
DENVER, CO 80216

IT IS A VIOLATION OF LAW FOR ANY PERSON, UNLESS THEY ARE ACTING UNDER THE DIRECTION OF A LICENSED PROFESSIONAL ENGINEER, TO ALTER THIS DOCUMENT.

DRAWN BY:	CHECKED BY:	APPROVED BY:
HW	ML	TA

RFDS REV #: 11/2/21

**PRELIMINARY DOCUMENTS**

SUBMITTALS		
REV	DATE	DESCRIPTION
A	11/29/21	ISSUED FOR REVIEW

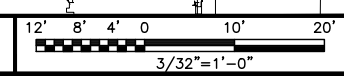
A&E PROJECT NUMBER  
**DNDEN00178B**

DISH Wireless L.L.C.  
PROJECT INFORMATION  
**DNDEN00178B**  
1323 WEST PLUM STREET  
FORT COLLINS, CO 80521

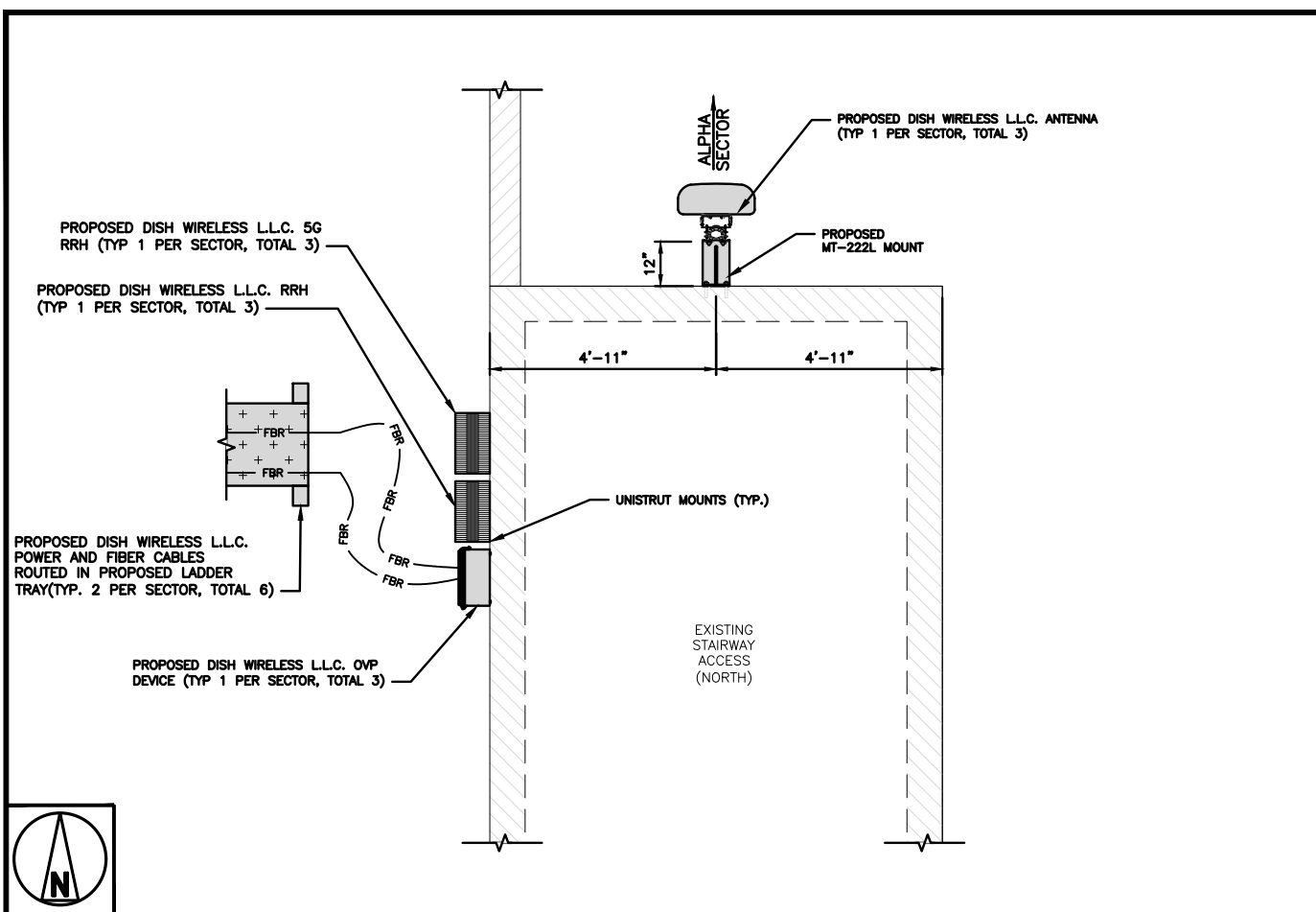
SHEET TITLE  
**OVERALL SITE PLAN**

SHEET NUMBER  
**A-1.2**

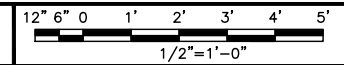
**OVERALL SITE PLAN**







ANTENNA PLAN - ALPHA SECTOR



1

**NOTES**

- CONTRACTOR SHALL FIELD VERIFY ALL DIMENSIONS.
- ANTENNA AND MW DISH SPECIFICATIONS REFER TO ANTENNA SCHEDULE AND TO FINAL CONSTRUCTION RFDS FOR ALL RF DETAILS

SECTOR	POSITION	ANTENNA						TRANSMISSION CABLE
		EXISTING OR PROPOSED	MANUFACTURER - MODEL NUMBER	TECHNOLOGY	SIZE (HxW)	AZMUTH	RAD CENTER	FEED LINE TYPE AND LENGTH
ALPHA	A1	PROPOSED	JMA - MX08FRO665-21	5G	72" x 20"	0°	65'	(2) CABLES (120' LONG)
BETA	B1	PROPOSED	JMA - MX08FRO665-21	5G	72" x 20"	120°	65'	(2) CABLES (120' LONG)
GAMMA	C1	PROPOSED	JMA - MX08FRO665-21	5G	72" x 20"	240°	65'	(2) CABLES (120' LONG)

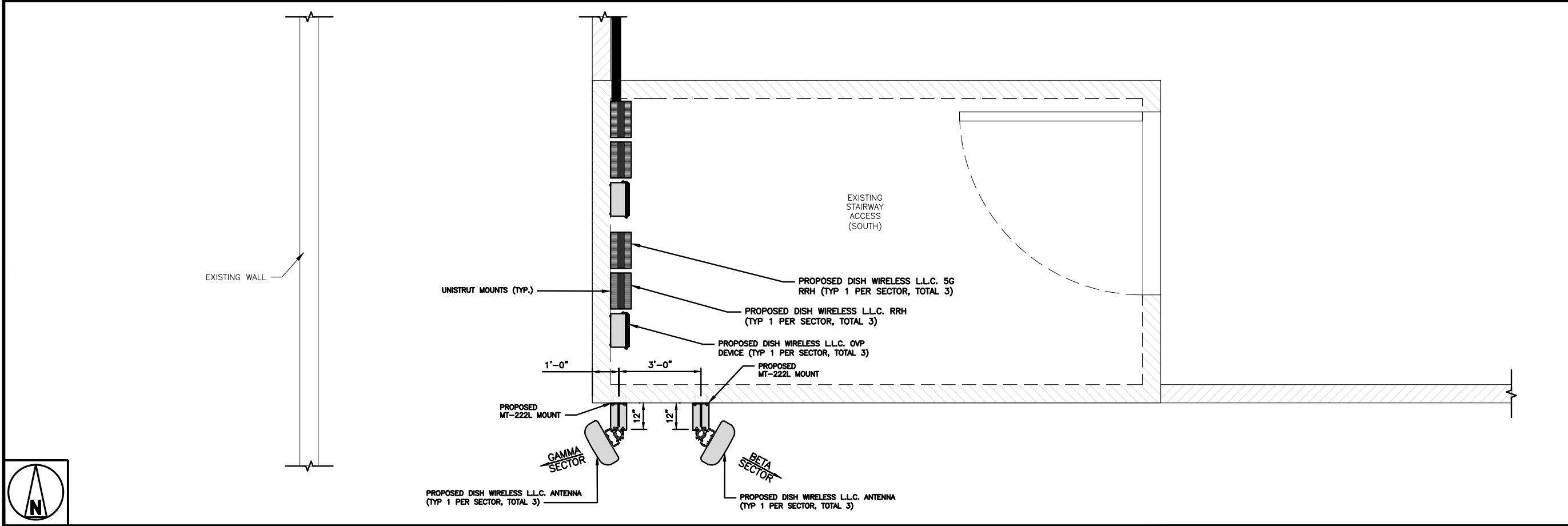
  

SECTOR	POSITION	RRH		NOTES
		MANUFACTURER - MODEL NUMBER	TECHNOLOGY	
ALPHA	A1	FUJITSU-TA8025-B604	5G	1. CONTRACTOR TO REFER TO FINAL CONSTRUCTION RFDS FOR ALL RF DETAILS. 2. ANTENNA AND RRH MODELS MAY CHANGE DUE TO EQUIPMENT AVAILABILITY. ALL EQUIPMENT CHANGES MUST BE APPROVED AND REMAIN IN COMPLIANCE WITH THE PROPOSED DESIGN AND STRUCTURAL ANALYSES.
	A1	FUJITSU-TA8025-B605	5G	
BETA	B1	FUJITSU-TA8025-B604	5G	
	B1	FUJITSU-TA8025-B605	5G	
GAMMA	C1	FUJITSU-TA8025-B604	5G	
	C1	FUJITSU-TA8025-B605	5G	

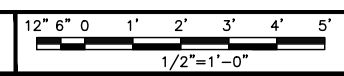
ANTENNA SCHEDULE

NO SCALE

2



ANTENNA PLAN - BETA AND GAMMA SECTOR



3



9601 S. MERIDIAN BLVD.  
ENGLEWOOD, CO 80112



6335 DOWNING ST  
DENVER, CO 80216

IT IS A VIOLATION OF LAW FOR ANY PERSON, UNLESS THEY ARE ACTING UNDER THE DIRECTION OF A LICENSED PROFESSIONAL ENGINEER, TO ALTER THIS DOCUMENT.

DRAWN BY: HW CHECKED BY: ML APPROVED BY: TA

RFDS REV #: 11/2/21

**PRELIMINARY DOCUMENTS**

SUBMITTALS		
REV	DATE	DESCRIPTION
A	11/29/21	ISSUED FOR REVIEW

A&E PROJECT NUMBER  
DNDEN00178B

DISH Wireless L.L.C.  
PROJECT INFORMATION  
DNDEN00178B  
1323 WEST PLUM STREET  
FORT COLLINS, CO 80521

SHEET TITLE  
ANTENNA PLAN  
AND SCHEDULE

SHEET NUMBER  
**A-3**





- NOTES**
1. CONTRACTOR SHALL FIELD VERIFY ALL DIMENSIONS.
  2. CONTRACTOR SHALL MAINTAIN A 10'-0" MINIMUM SEPARATION BETWEEN THE PROPOSED GPS UNIT, TRANSMITTING ANTENNAS AND EXISTING GPS UNITS.

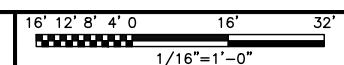


9601 S. MERIDIAN BLVD.  
ENGLEWOOD, CO 80112

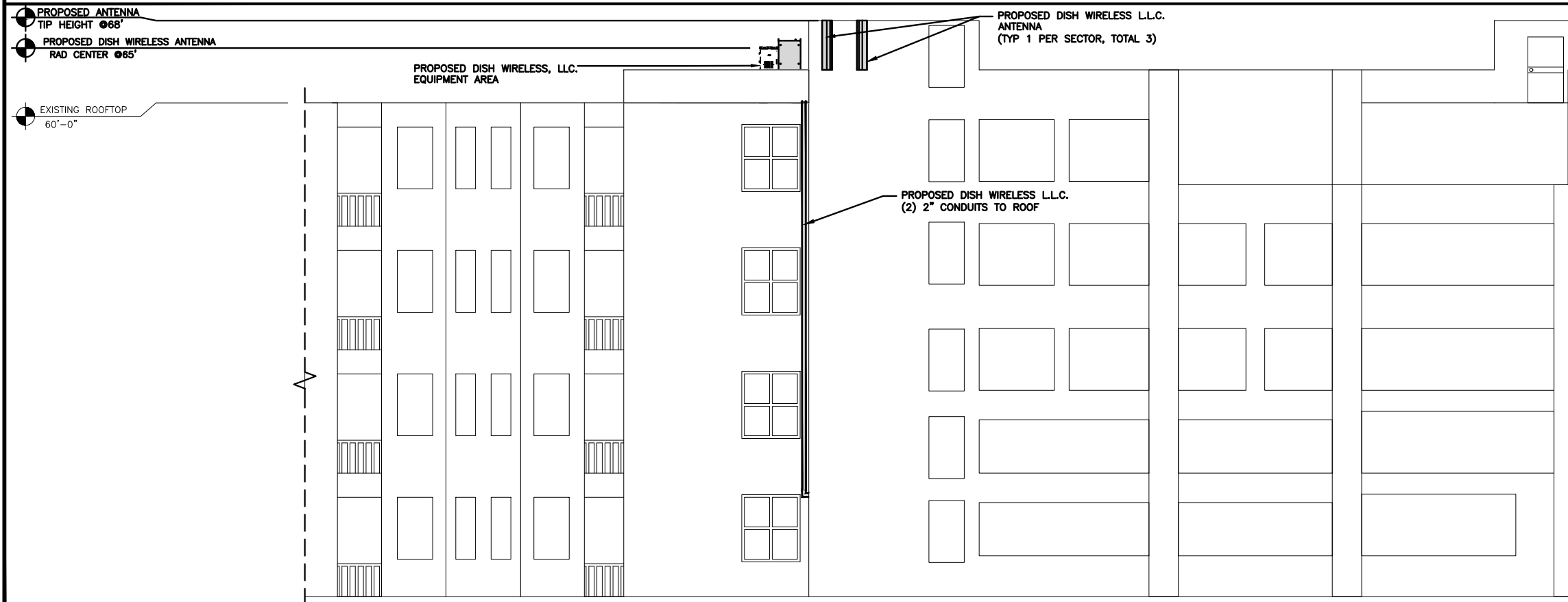


6335 DOWNING ST  
DENVER, CO 80216

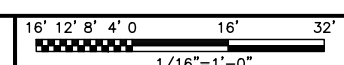
**BUILDING NORTH ELEVATION**



1



**BUILDING SOUTH ELEVATION**



2

IT IS A VIOLATION OF LAW FOR ANY PERSON, UNLESS THEY ARE ACTING UNDER THE DIRECTION OF A LICENSED PROFESSIONAL ENGINEER, TO ALTER THIS DOCUMENT.

DRAWN BY:	CHECKED BY:	APPROVED BY:
HW	ML	TA
RFDS REV #:		11/2/21

**PRELIMINARY DOCUMENTS**

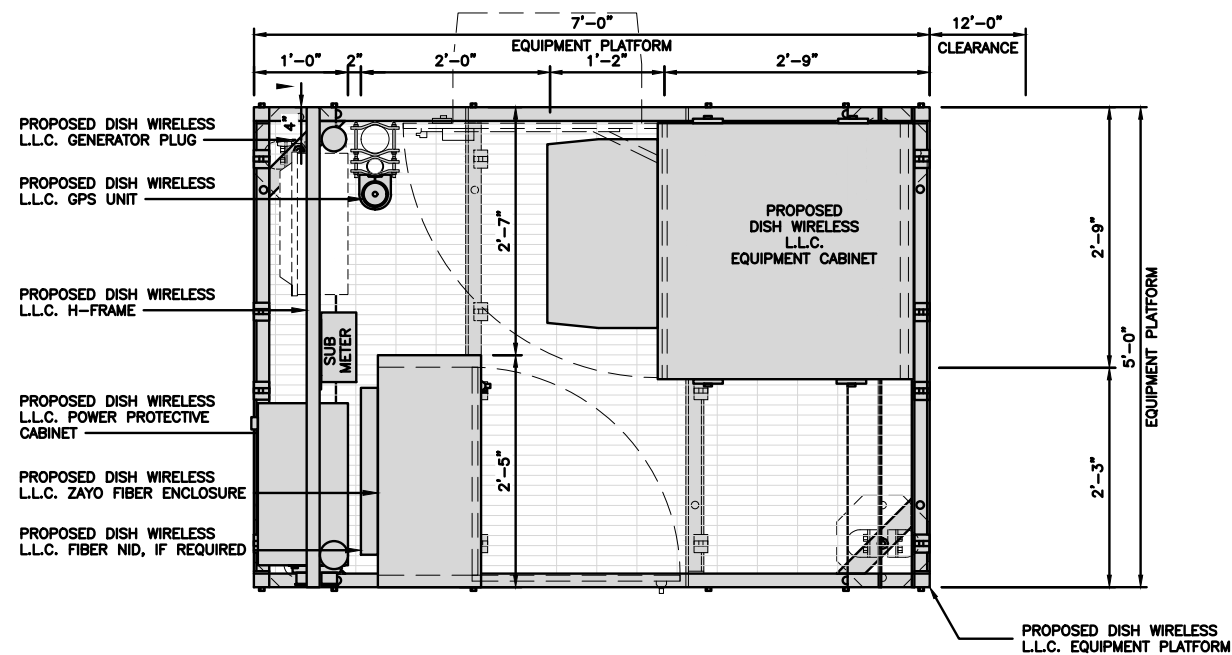
SUBMITTALS		
REV	DATE	DESCRIPTION
A	11/29/21	ISSUED FOR REVIEW

A&E PROJECT NUMBER  
**DNDEN00178B**

DISH Wireless L.L.C.  
PROJECT INFORMATION  
**DNDEN00178B**  
1323 WEST PLUM STREET  
FORT COLLINS, CO 80521

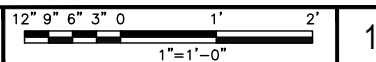
SHEET TITLE  
**NORTH & SOUTH ELEVATIONS**

SHEET NUMBER  
**A-4.1**



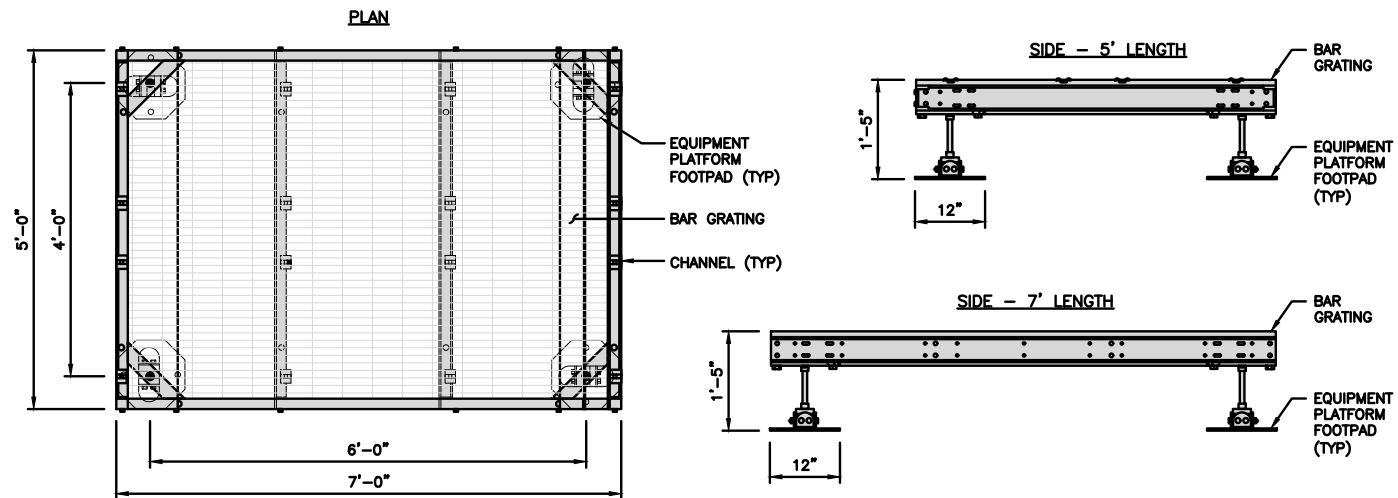
NOTE:  
SUB METER TO BE  
INSTALLED BY AC PANEL.

PLATFORM EQUIPMENT AND SCREEN WALL PLAN



<b>COMMSCOPE MTC4045LP 5X7 PLATFORM</b>	
DIMENSIONS (HxWxD)	16"x84"x60"
TOTAL WEIGHT	423 LBS

NOTE:  
GC TO PROVIDE EXTENDED  
THREAD FOR PLATFORM IF  
REQUIRED HEIGHT EXCEEDS 17"

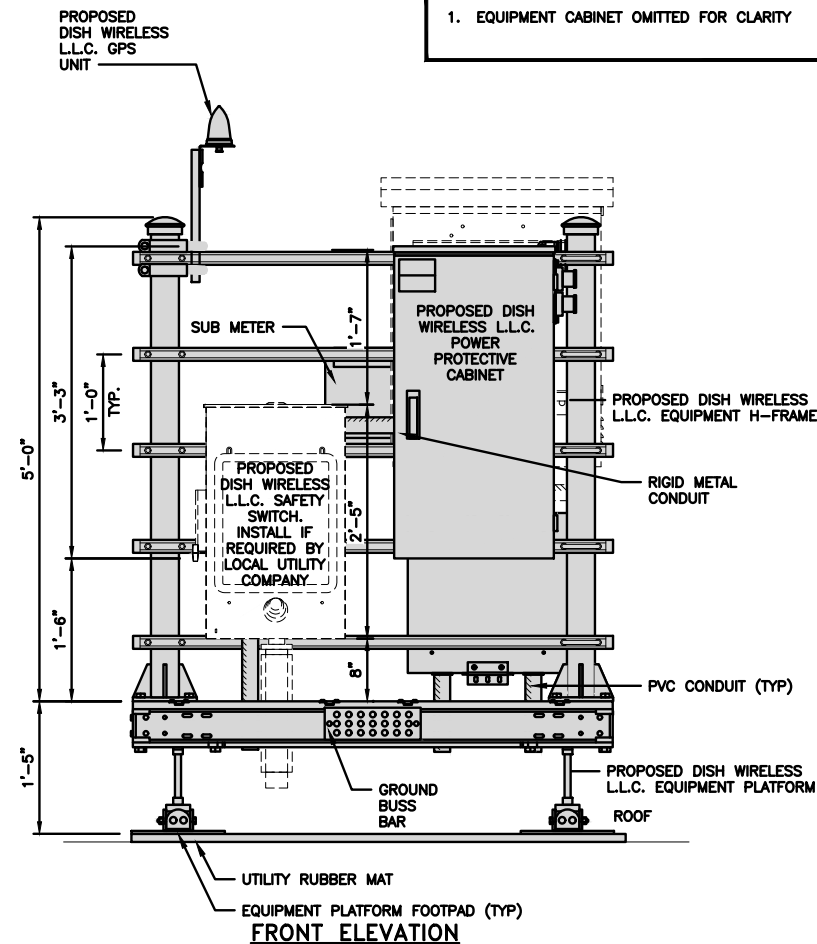


PLATFORM DETAIL

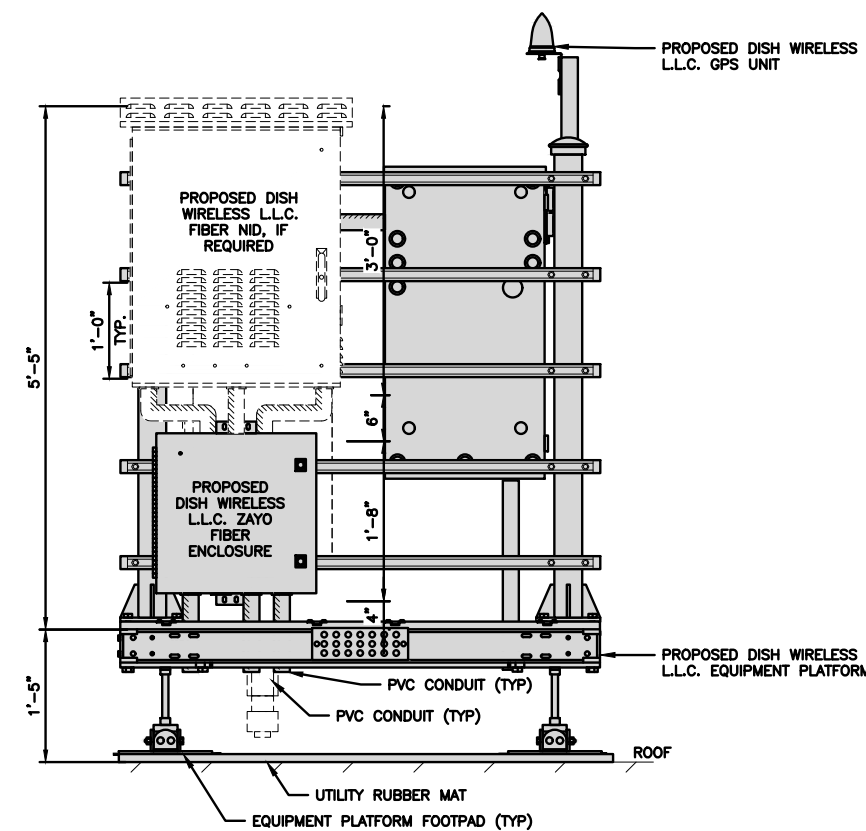
NO SCALE 2

NOTE

1. EQUIPMENT CABINET OMITTED FOR CLARITY

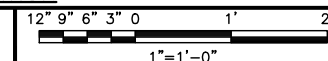


FRONT ELEVATION



BACK ELEVATION

H-FRAME EQUIPMENT ELEVATION



5



9601 S. MERIDIAN BLVD.  
ENGLEWOOD, CO 80112



6335 DOWNING ST  
DENVER, CO 80216

IT IS A VIOLATION OF LAW FOR ANY PERSON,  
UNLESS THEY ARE ACTING UNDER THE DIRECTION  
OF A LICENSED PROFESSIONAL ENGINEER,  
TO ALTER THIS DOCUMENT.

DRAWN BY: CHECKED BY: APPROVED BY:  
HW ML TA

RFDS REV #: 11/2/21

PRELIMINARY  
DOCUMENTS

SUBMITTALS		
REV	DATE	DESCRIPTION
A	11/29/21	ISSUED FOR REVIEW

A&E PROJECT NUMBER  
DNDEN00178B

DISH Wireless L.L.C.  
PROJECT INFORMATION  
DNDEN00178B  
1323 WEST PLUM STREET  
FORT COLLINS, CO 80521

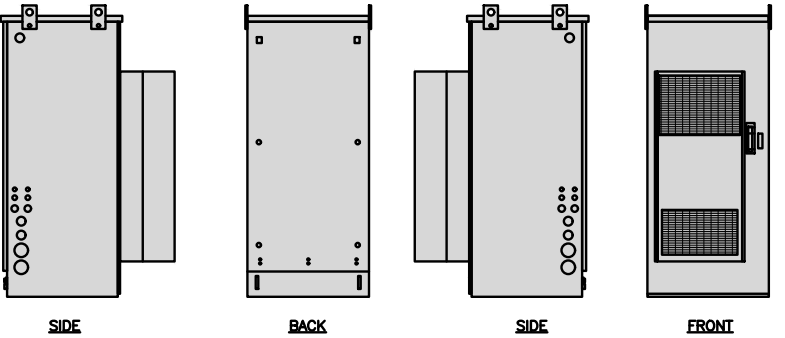
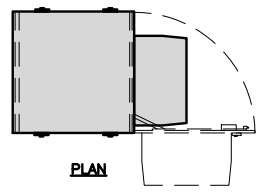
SHEET TITLE  
EQUIPMENT PLATFORM AND  
SCREEN WALL DETAILS

SHEET NUMBER

A-5



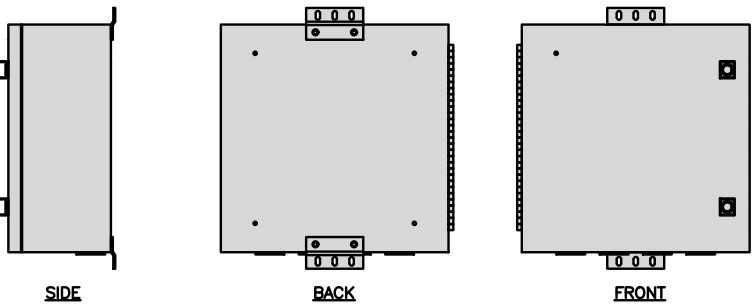
CHARLES INDUSTRY PM639155N4 H/EX CABINET	
DIMENSIONS (HxWxD):	74"x32"x32"
POWER PLANT:	48VDC ABB
HVAC:	6000W DC
TOTAL WEIGHT (408 LBS. empty)	876.10 LBS (fully loaded)



CABINET DETAIL

NO SCALE 1

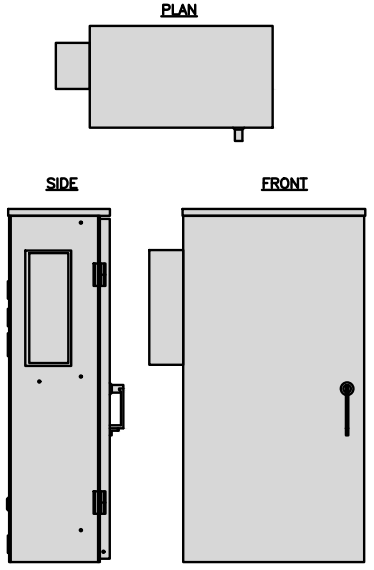
CHARLES CFIT-PF2020DSH1 FIBER TELCO ENCLOSURE	
ENCLOSURE DIMS (HxWxD)	20"x20"x9"
ENCLOSURE WEIGHT	20 lbs
MOUNTING	WALL
COMPLIANCE	TYPE 4



FIBER TELCO ENCLOSURE DETAIL

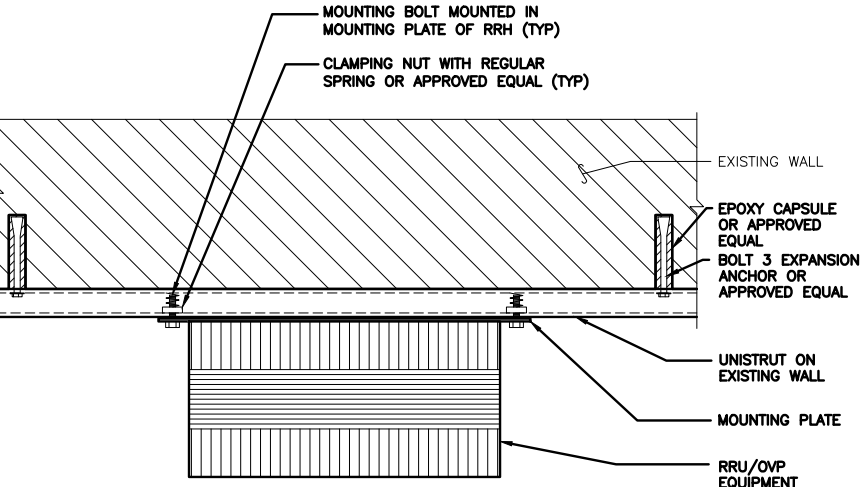
NO SCALE 2

RAYCAP RDIDC-3045-PF-48 POWER & TELCO PROTECTION CABINET	
DIMENSIONS (HxWxD)	40"x20"x10"
WEIGHT/ VOLUME	124 LBS
MANUAL TRANSFER SWITCH	200A
LOAD CENTER	30 POSITION
MAIN BREAKER	200A, 65KA AIC
GENERATOR RECEPTACLE	CAMLOCK
NEMA RATING	3R POWDER COATED ALUMINUM
SURGE PROTECTION DEVICE	UL 1449 4TH EDITION LISTED



POWER PROTECTION CABINET (PPC) DETAIL

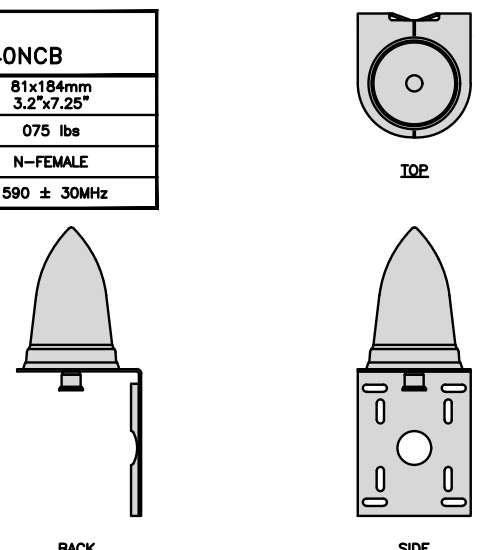
NO SCALE 3



RRH/OVP UNISTRUT WALL MOUNT DETAIL

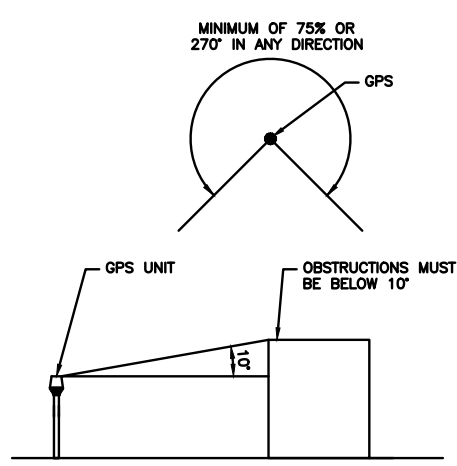
NO SCALE 4

PCTEL GPSGL-TMG-SPI-40NCB	
DIMENSIONS (DIAxH) MM/INCH	81x184mm 3.2"x7.25"
WEIGHT W/ACCESSORIES	075 lbs
CONNECTOR	N-FEMALE
FREQUENCY RANGE	1590 ± 30MHz



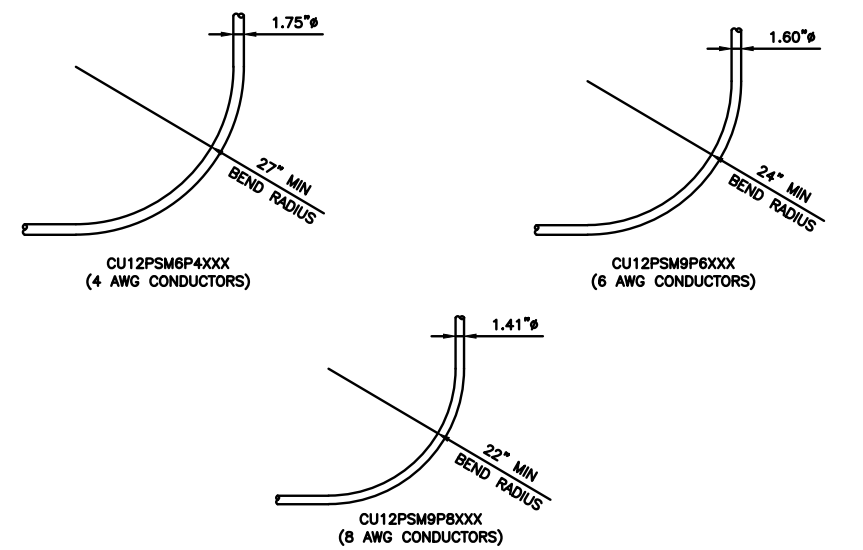
GPS DETAIL

NO SCALE 5



GPS MINIMUM SKY VIEW REQUIREMENTS

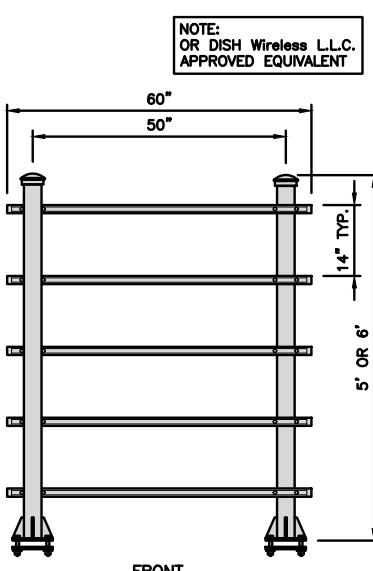
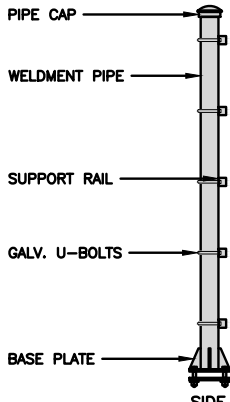
NO SCALE 6



CABLES UNLIMITED HYBRID CABLE  
MINIMUM BEND RADIUS

NO SCALE 7

COMMSCOPE MTC4045HFLD H-FRAME	
UNISTRUT/SUPPORT RAILS QTY	5
WEIGHT	59.74 lbs



H-FRAME DETAIL

NO SCALE 8

NOTE:  
OR DISH Wireless L.L.C.  
APPROVED EQUIVALENT

NOT USED

NOT USED

NO SCALE 9



9601 S. MERIDIAN BLVD.  
ENGLEWOOD, CO 80112



6335 DOWNING ST  
DENVER, CO 80216

IT IS A VIOLATION OF LAW FOR ANY PERSON, UNLESS THEY ARE ACTING UNDER THE DIRECTION OF A LICENSED PROFESSIONAL ENGINEER, TO ALTER THIS DOCUMENT.

DRAWN BY:	CHECKED BY:	APPROVED BY:
HW	ML	TA
RFDS REV #:		11/2/21

PRELIMINARY DOCUMENTS

SUBMITTALS		
REV	DATE	DESCRIPTION
A	11/29/21	ISSUED FOR REVIEW

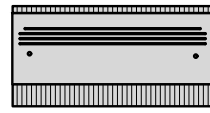
A&E PROJECT NUMBER  
DNDEN00178B

DISH Wireless L.L.C.  
PROJECT INFORMATION  
DNDEN00178B  
1323 WEST PLUM STREET  
FORT COLLINS, CO 80521

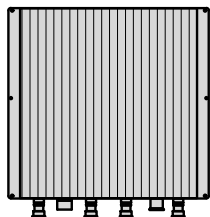
SHEET TITLE  
EQUIPMENT AND  
H-FRAME DETAILS

SHEET NUMBER  
**A-6**

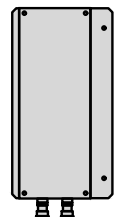
FUJITSU DUAL BAND TA08025-B604	
DIMENSIONS (HxWxD)	14.9"x15.7"x7.8"
WEIGHT	63.9 lbs
CONNECTOR TYPE	4.3-10 RF CONNECTOR
POWER SUPPLY	DC -58~-36V



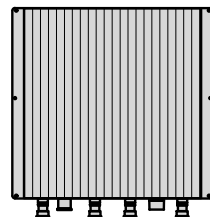
PLAN



BACK



SIDE



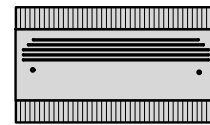
FRONT

RRH DETAIL

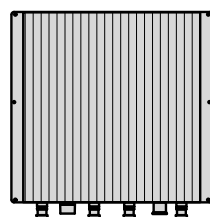
NO SCALE

1

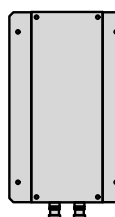
FUJITSU TRIPLE BAND TA08025-B605	
DIMENSIONS (HxWxD)	14.9"x15.7"x9"
WEIGHT	74.95 lbs
CONNECTOR TYPE	4.3-10 RF CONNECTOR
POWER SUPPLY	DC -58~-36V



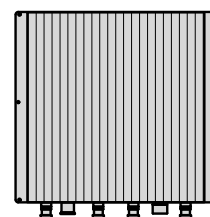
PLAN



BACK



SIDE



FRONT

RRH DETAIL

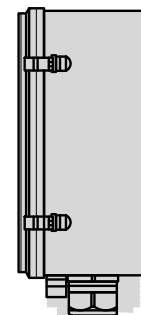
NO SCALE

2

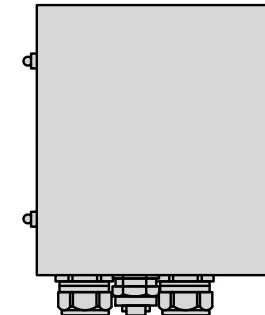
RAYCAP RDIDC-3045-PF-48 SURGE PROTECTION DEVICE (OVP)	
DIMENSIONS (HxWxD)	16.58" x 14.58" x 8.46"
WEIGHT	21.85 LBS



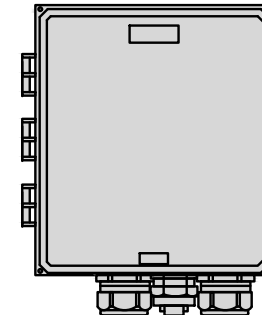
PLAN



SIDE



BACK



FRONT

SURGE PROTECTION DEVICE DETAIL (OVP)

NO SCALE

3

JMA WIRELESS MX08FRO665-21 ANTENNA	
DIMENSIONS (HxWxD)	72.0"x20.0"x8.0"
TOTAL WEIGHT	54 LB
RF PORTS, CONNECTOR TYPE	8 x 4.3-10 FEMALE



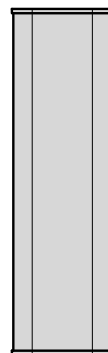
PLAN



BACK



SIDE



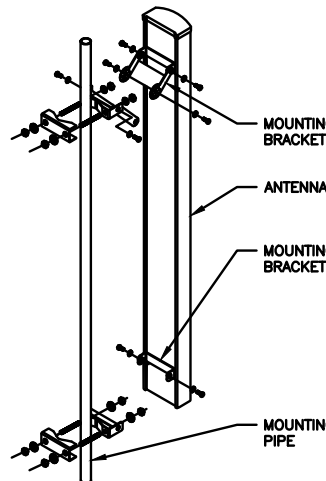
FRONT

ANTENNA DETAIL

NO SCALE

4

M04 MOUNTING BRACKET HPA-33R-BUU-H4-K	
WIDTH	5"
DEPTH	2"
HEIGHT	8"
TOTAL WEIGHT	1.5 lbs
HOUSING MATERIAL	ASA/ABS/ALUMINUM
RADOME COLOR	LIGHT GRAY
CONNECTOR	1x8-PIN DAISY CHAIN



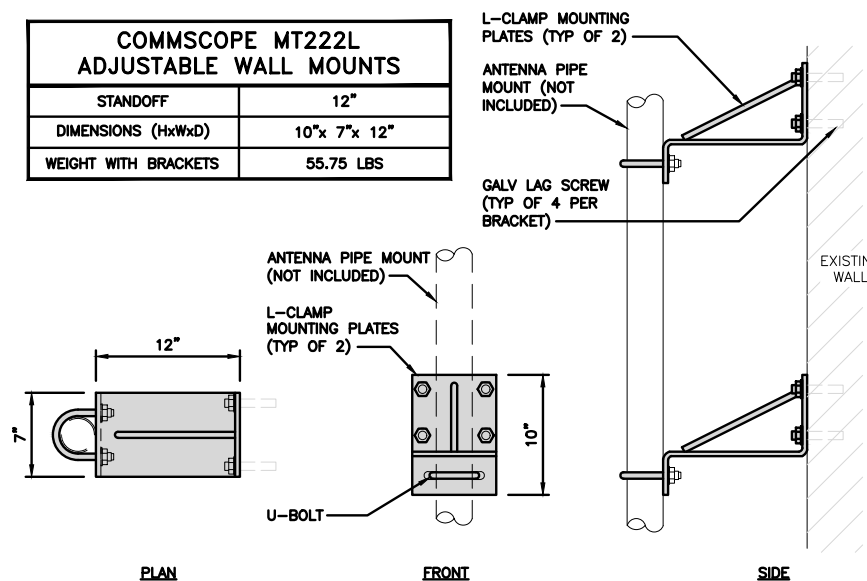
NOTE:  
OR DISH Wireless L.L.C.  
APPROVED EQUIVALENT

ANTENNA MOUNTING DETAIL

NO SCALE

5

COMMSCOPE MT222L ADJUSTABLE WALL MOUNTS	
STANDOFF	12"
DIMENSIONS (HxWxD)	10"x 7"x 12"
WEIGHT WITH BRACKETS	55.75 LBS



PLAN

FRONT

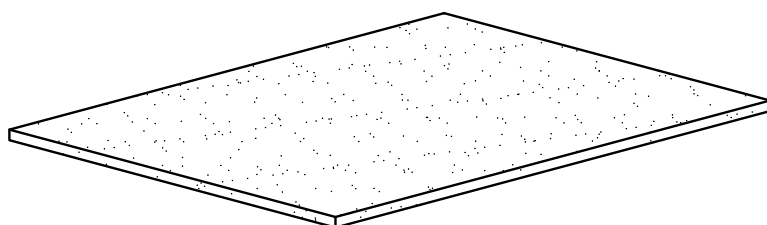
SIDE

ADJUSTABLE WALL MOUNT DETAIL

NO SCALE

6

UTILITY RUBBER MAT, BLACK	
DIMENSIONS	4'x 3'x 1/2"
WEIGHT/ VOLUME	36.5 LB AVERAGE
MATERIAL	100% RECYCLE RUBBER

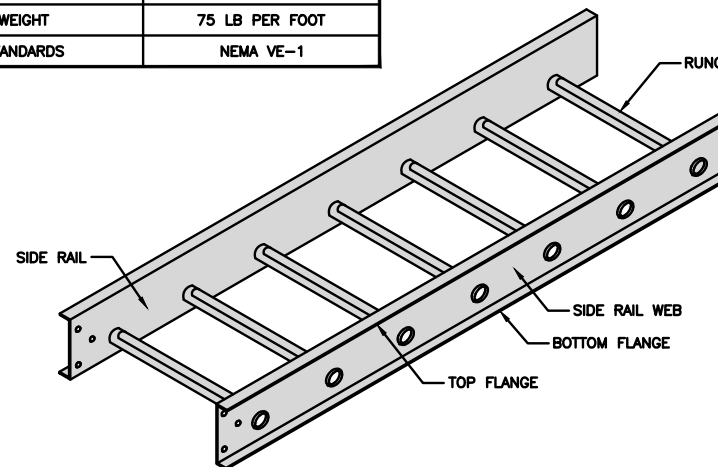


UTILITY RUBBER MAT DETAIL

NO SCALE

7

COPE 1B48-12SL-12-09 ROOFTOP LADDER TRAY	
DIMENSIONS (HxWxL)	5.25"x12"x12'
WEIGHT	75 LB PER FOOT
STANDARDS	NEMA VE-1



ROOFTOP LADDER TRAY DETAIL

NO SCALE

8

NOT USED

NO SCALE

9

**dish**  
wireless.

9601 S. MERIDIAN BLVD.  
ENGLEWOOD, CO 80112

**WYCO**  
FIELD SERVICES  
Where quality still counts.

6335 DOWNING ST  
DENVER, CO 80216

IT IS A VIOLATION OF LAW FOR ANY PERSON,  
UNLESS THEY ARE ACTING UNDER THE DIRECTION  
OF A LICENSED PROFESSIONAL ENGINEER,  
TO ALTER THIS DOCUMENT.

DRAWN BY: CHECKED BY: APPROVED BY:

HW ML TA

RFDS REV #: 11/2/21

**PRELIMINARY  
DOCUMENTS**

SUBMITTALS		
REV	DATE	DESCRIPTION
A	11/29/21	ISSUED FOR REVIEW

A&E PROJECT NUMBER  
DNDEN00178B

DISH Wireless L.L.C.  
PROJECT INFORMATION

DNDEN00178B  
1323 WEST PLUM STREET  
FORT COLLINS, CO 80521

SHEET TITLE  
EQUIPMENT DETAILS

SHEET NUMBER

**A-7**